



# UAA School of Engineering

UNIVERSITY *of* ALASKA ANCHORAGE



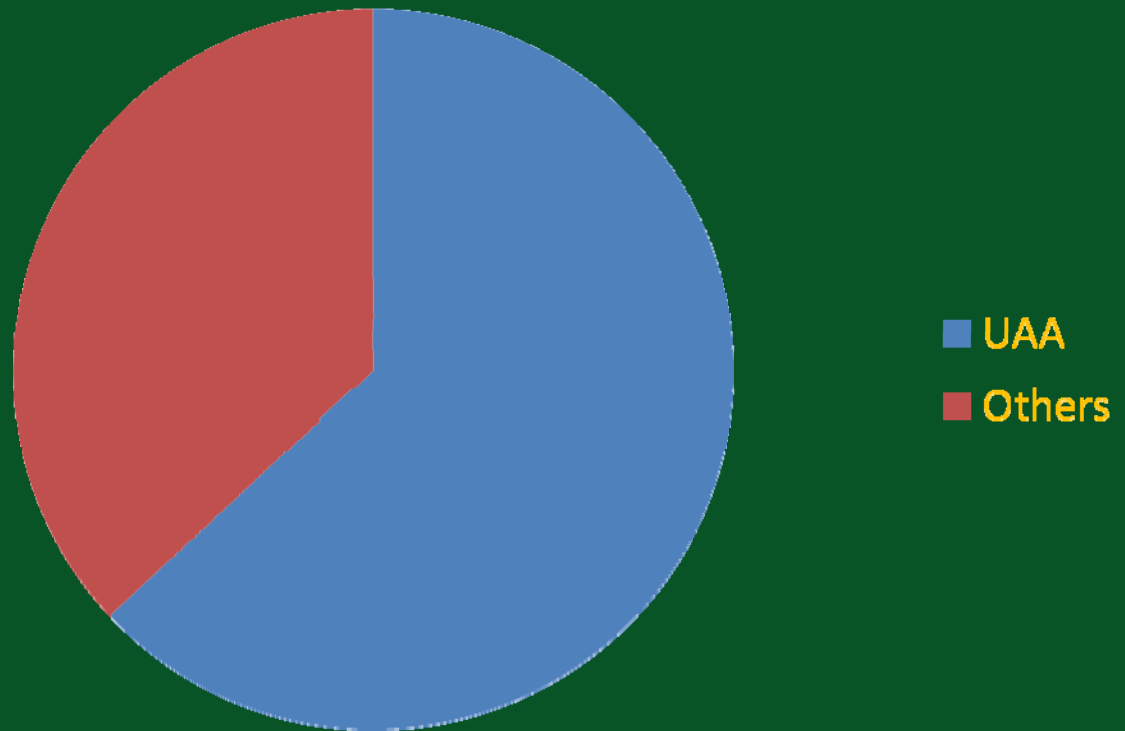
School of Engineering



# School of Engineering (SOE) at UAA

## Engineering student distribution in Alaska

- Total 1000 FTS
- 500 in BSE
  - 60% ME
  - 40% EE & CSE
- 250 in CE
- 230 ESPM
- 70 Geomatics



UAA

UNIVERSITY  
of ALASKA  
ANCHORAGE



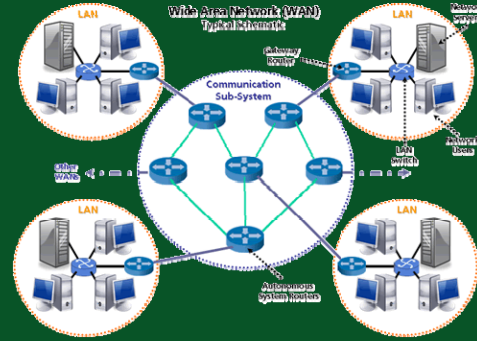
# Civil Engineering



UAA School of Engineering  
UNIVERSITY of ALASKA ANCHORAGE



# Computer Systems Engineering



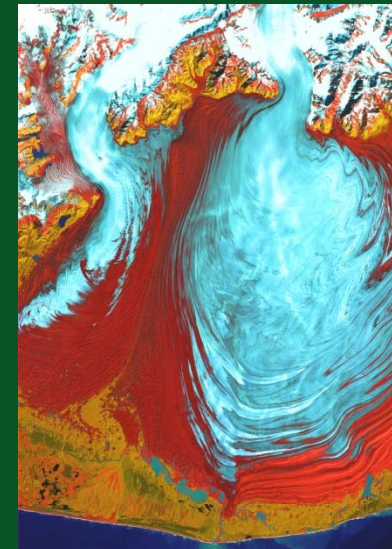


UAA

UNIVERSITY  
of ALASKA  
ANCHORAGE



# Geomatics/Surveying



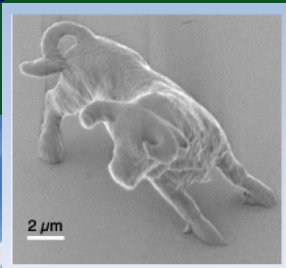
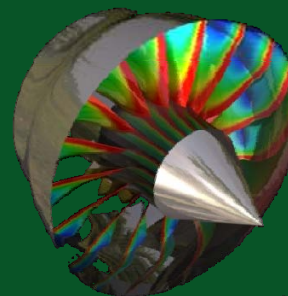
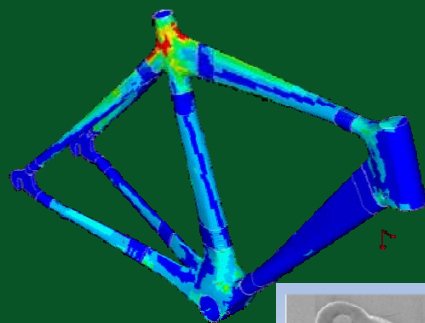
UAA School of Engineering  
UNIVERSITY of ALASKA ANCHORAGE

UAA

UNIVERSITY  
of ALASKA  
ANCHORAGE



# Mechanical Engineering



UAA School of Engineering  
UNIVERSITY of ALASKA ANCHORAGE



# Some of the Research and Project Opportunities in SOE:

- Renewable Energy Systems
- Intelligent Transportation Systems
- Biomechanical Engineering
- Computer and Network Security
- Impact Protection Systems
- Signals and Antenna
- Micro and Nano Compliance Mechanisms
- Development for Tablet/Handheld Devices
- Structural Engineering
- Earthquake Engineering
- Water Resources
- Water and Wastewater Processing
- You may choose from any open project ideas!





## It's time!

- Learn fundamental concepts in Civil Engineering, Computer Systems Engineering, Electrical Engineering , Mechanical Engineering, and Geomatics
- It is an exciting time to be a young engineer with many rewarding career opportunities
- At UAA, students have the opportunity to work in multidisciplinary teams
- All Engineering Programs at UAA are ABET Accredited
- UAA has the only ABET Accredited Computer Systems Engineering Program in the State of Alaska





## We are a click away!

- Contact us if you have any questions. We are more than happy to talk to motivated students, and always welcome questions!
- Prof. Jeffrey Miller: [jmiller@uaa.alaska.edu](mailto:jmiller@uaa.alaska.edu), BSE Dept. Chair
- Prof. Sun-il Kim: [kim@uaa.alaska.edu](mailto:kim@uaa.alaska.edu), BSE, CSE Program Chair
- Prof. Jens Munk: [afjm@uaa.alaska.edu](mailto:afjm@uaa.alaska.edu), BSE, EE Program Chair
- Prof. Jeffrey Hoffman: [afjh5@uaa.alaska.edu](mailto:afjh5@uaa.alaska.edu), BSE, ME Program Chair
- Prof. Tom Ravens: [aftmr@uaa.alaska.edu](mailto:aftmr@uaa.alaska.edu), Civil Engr. Dept. Chair
- Prof. Bill Hazelton: [afb3@uaa.alaska.edu](mailto:afb3@uaa.alaska.edu), Geomatics Dept. Chair

<http://soe.uaa.alaska.edu>

or

<http://www.uaa.alaska.edu/schoolofengineering>

